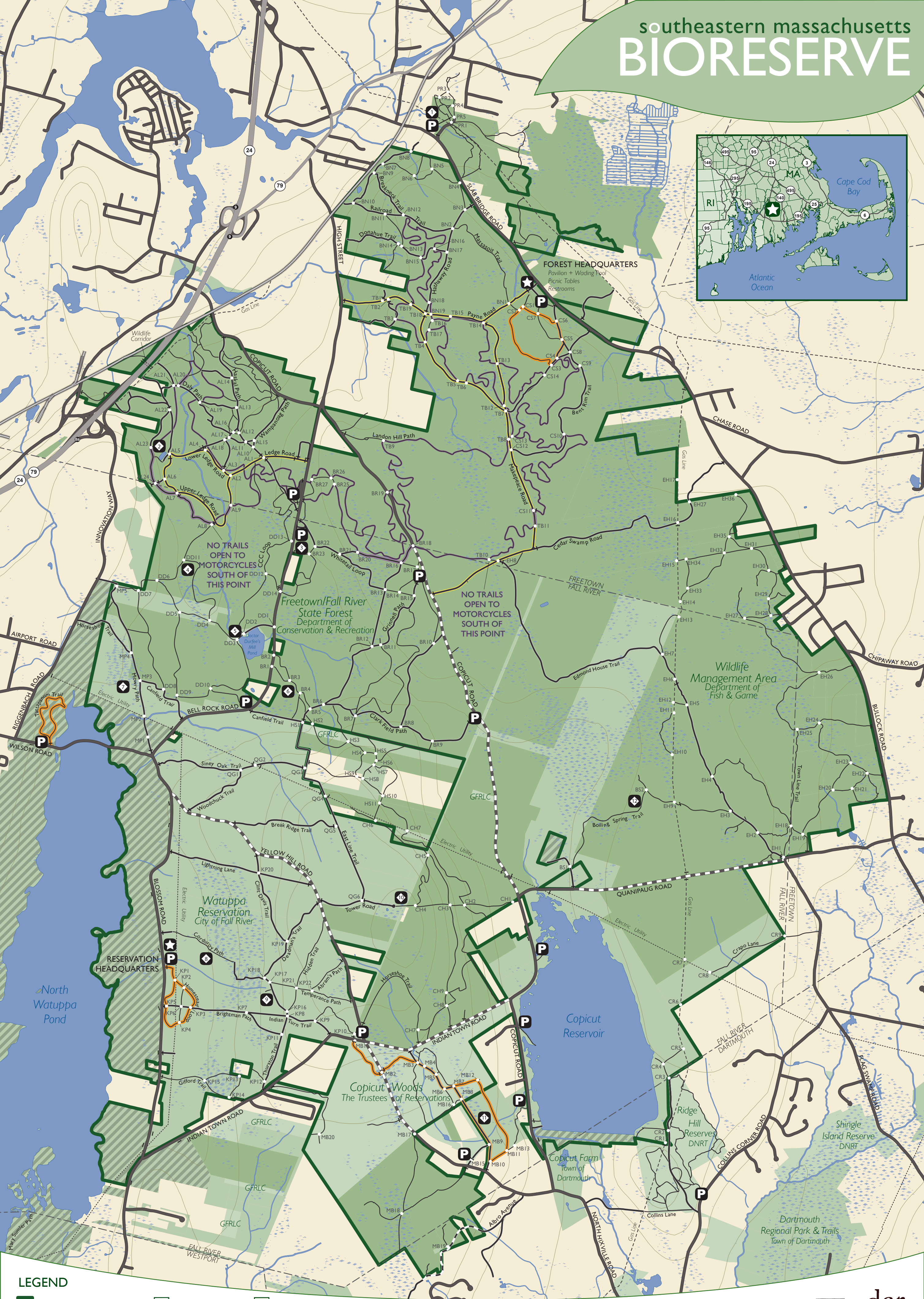
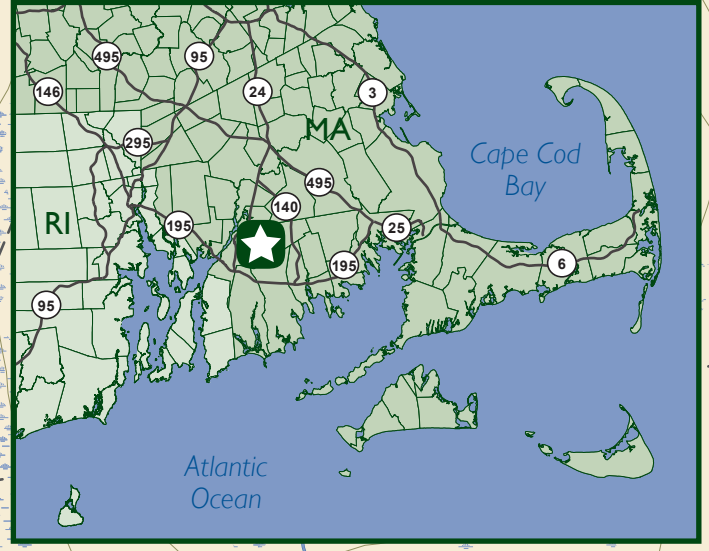


southeastern massachusetts BIRESERVE



LEGEND

- | | | | | |
|----------------------------|--------------|----------------------------|--------------|------------------------------|
| Southeastern MA Bioreserve | Wetlands | Self-guided Trails | Headquarters | Feature |
| State Land | Public Roads | Trails Open to Automobiles | Parking | 1. Profile Rock |
| Municipal Land | Rough Roads | Trails Open to Motorcycles | Gate | 2. Assonet Ledge |
| Nonprofit Land | Woods Roads | Streams | Intersection | 3. Bell Rock |
| Restricted Access | Foot Trails | Elevation Contour (10ft) | | 4. Hog's Rock |
| | | | | 5. Doctor Durfee's Mill Pond |
| | | | | 6. Esker Trail |
| | | | | 7. Mowry Path |
| | | | | 8. Corduroy Path |
| | | | | 9. King Philip's Spring |
| | | | | 10. Copicut Hill Fire Tower |
| | | | | 11. Miller Lane |
| | | | | 12. Boiling Spring |

0 0.25 1 mi