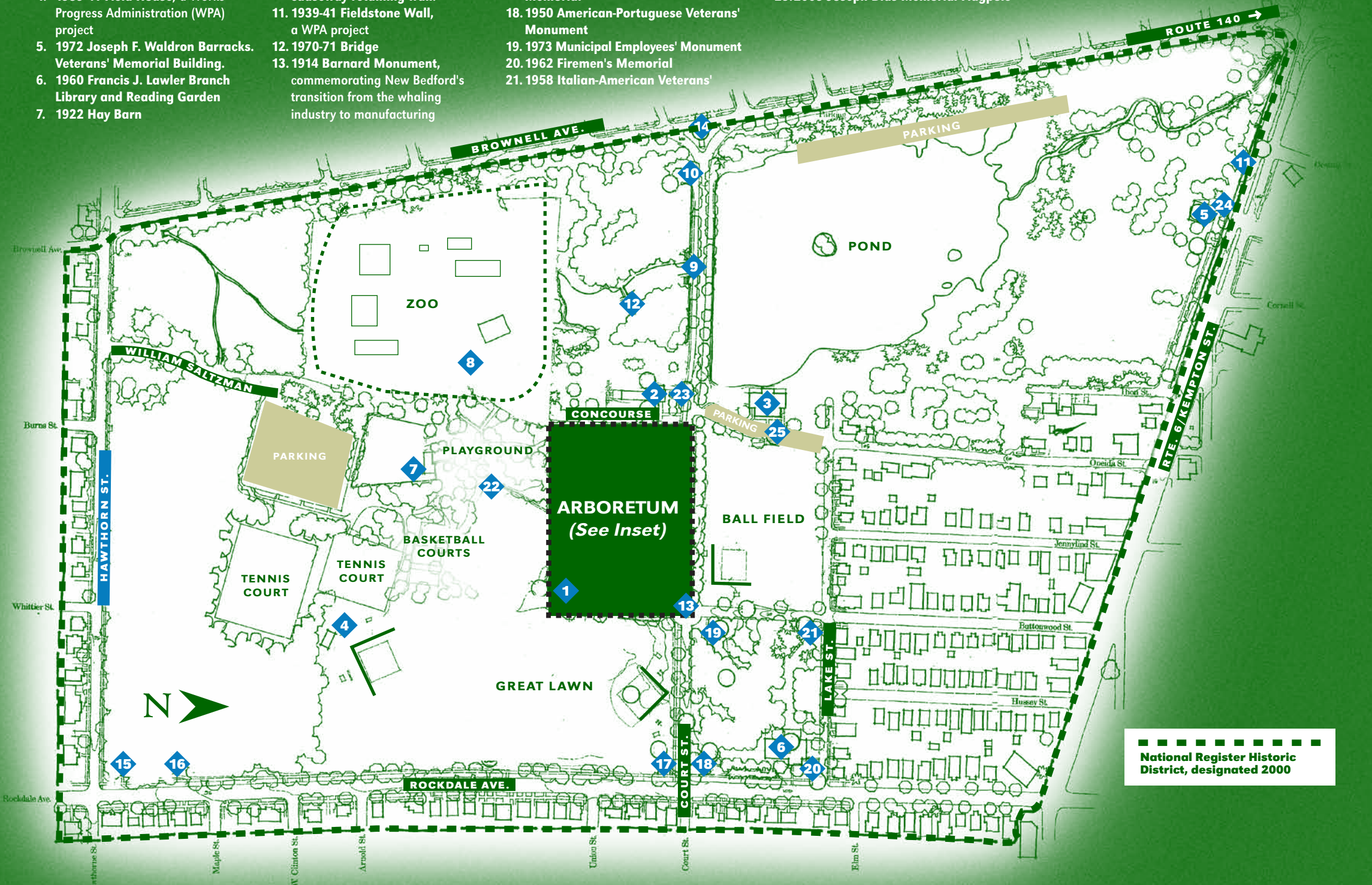


# Historic Features of the Park

- |   |  |   |   |
|---|--|---|---|
| 1. 1921 Comfort Station   | 8. 1936 Bear Den, a WPA project  | 14. 1936 British Memorial Monument              | Memorial                                    |
| 2. 1921 Potting Shed, Greenhouse and Formal Display Gardens           | 9. 1902-05 Dam/Causeway  | 15. 1962 Jewish War Veterans' Memorial          | 22. Drinking Fountain                       |
| 3. 1934-35 Warming House  | 10. 1905 Cobblestone Post, only surviving remnant of original causeway retaining wall.                       | 16. 1998 Holocaust Memorial                     | 23. 1966 Henry J. Wareing Memorial Fountain |
| 4. 1939-41 Field House, a Works Progress Administration (WPA) project | 11. 1939-41 Fieldstone Wall, a WPA project   | 17. 1976 Black American War Veterans' Memorial  | 24. 1996 World War II Memorial              |
| 5. 1972 Joseph F. Waldron Barracks. Veterans' Memorial Building.      | 12. 1970-71 Bridge   | 18. 1950 American-Portuguese Veterans' Monument | 25. 2003 Joseph Dias Memorial Flagpole      |
| 6. 1960 Francis J. Lawler Branch Library and Reading Garden           | 13. 1914 Barnard Monument, commemorating New Bedford's transition from the whaling industry to manufacturing | 19. 1973 Municipal Employees' Monument          |   |
| 7. 1922 Hay Barn  |  | 20. 1962 Firemen's Memorial                     |   |
|   |  | 21. 1958 Italian-American Veterans' Memorial    |   |

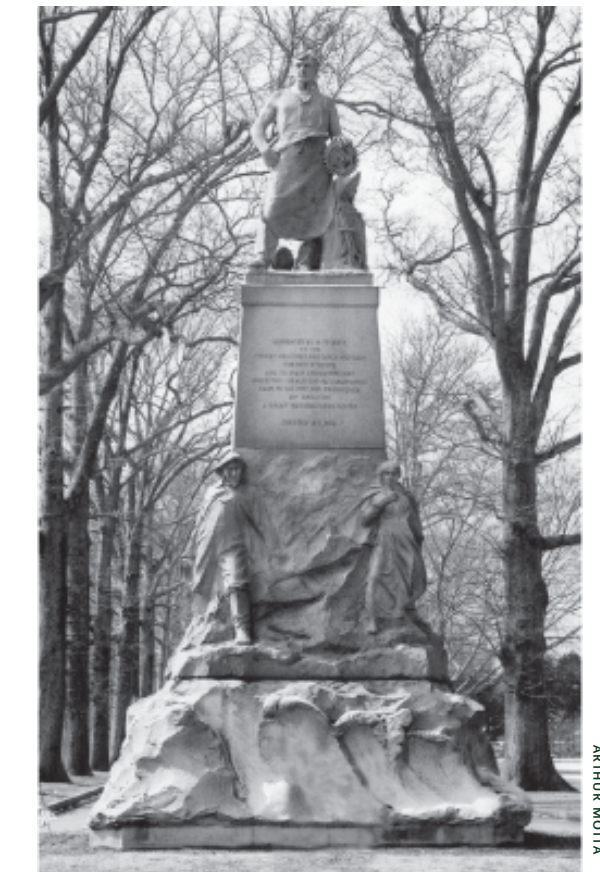


**National Register Historic District, designated 2000**

## Park Arboretum (inset)



## BARNARD MONUMENT



ARTHUR MOTA